

STANDARD EQUIPMENT

- Automatic outriggers levelling with electronic inclinometer
- Outrigger pads (Ø 200 mm)
- Emergency hand pump
- Cylinder holding valve
- Electronic hour meter
- Load cell
- Hydraulic Jib
- Rubber tracks
- Hydraulically adjustable tracks width
- 230V - 16 A electro-pump for indoor use
- Air / Water outlet in the platform
- 230V - 16 A outlet in the platform
- Honda GX390 petrol engine - 11 HP 3600 rpm
- Yanmar L100N diesel engine - 9.9 HP 3600 rpm
- Removable wired control box (5m cable)

OPTIONALS

- 12V emergency electro-pump
- Double speed traction
- Non-marking rubber tracks
- Oversized outrigger pads (Ø 350 mm)
- Wireless radio-control box
- Working light in the platform
- Aluminium basket (0.90 x 0.70 x 1.10 m)

BENEFITS

- ✓ Double articulation boom with active jib for a high operability in all construction site conditions.
- ✓ Hydraulically adjustable tracks width: more stability and traction to move around the building site or rough terrain.
- ✓ State-of-the-art removable control panel: fast and versatile use of the machine.
- ✓ Proportional and simultaneous electro-hydraulic controls: efficiency and safety for operators.
- ✓ Automatic outriggers levelling: maximum easiness of use and safety.
- ✓ Permanent weight control device for improved safety and performance.
- ✓ Slewing 360° (not continuous): outstanding aerial accessibility in any work situation.
- ✓ Basket rotation ± 62°: complete placement on working site in any condition.
- ✓ Compact size, with limited overall outrigger footprint.
- ✓ Engine guarded for safety and working protection.
- ✓ Aluminium basket 1.40 x 0.70 x 1.10 m.
- ✓ Innovative design with fully enclosed structure.





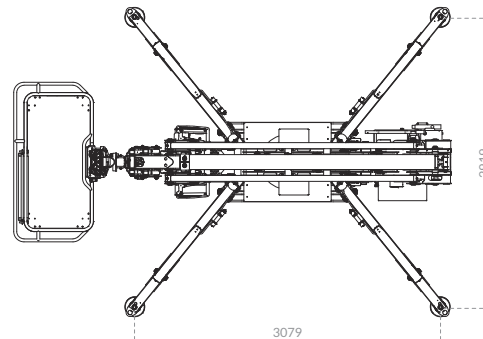
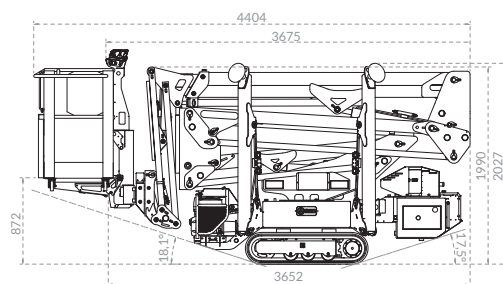
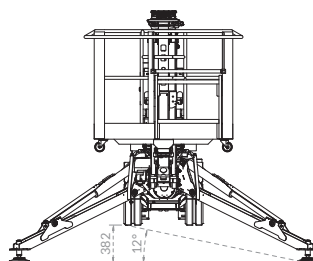
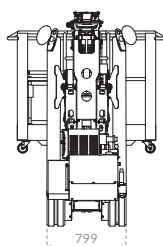
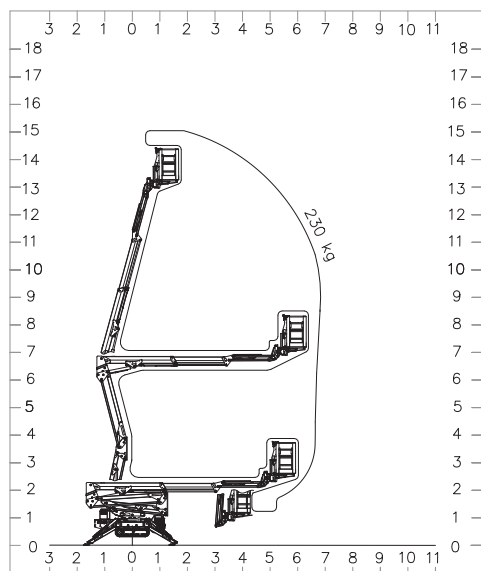
m. 7,00



Compact jib group with load cell and basket rotation system.

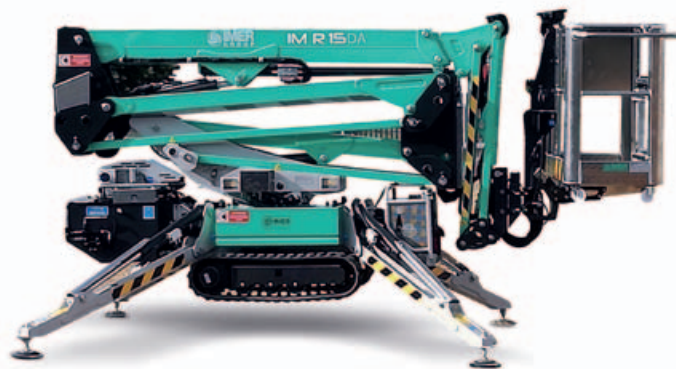


Strong protective engine structure for an increased impact protection.



IMR 15 DA

Working height	m	15
Platform height	m	13
Side outreach	m/kg	7.00 / 230
Up & Over	m	7.00
Slewing	(°)	360° (± 180°)
Basket dimensions	m	1.40 x 0.70 x 1.10
Overall outrigger footprint	m	2.92 x 3.08
Driving speed	km/h	1.8
Gradeability	(°)	17.5°
Max load capacity	kg	230
Electric motor		230V / 2.2 kW
Petrol engine Honda GX390		11 HP 3600 rpm
Diesel engine Yanmar L100N		9.9 HP 3600 rpm
Transport length (without basket)	m	4.40 (3.65)
Transport width	m	Min 0.79 / Max 1.06
Transport height (with outrigger pads)	m	Min 1.99 (Max 2.05)
Total weight	kg	2030



Compact dimensions for maximum accessibility into any work environment.