

## SIDE-MOUNTED ENGINE

The **Venieri VF 1.33B** thanks to its side-mounted engine counterweighted at the opposite side grants:

- › Better weight distribution between axles
- › Real longitudinal and transverse stability
- › Total front and rear visibility
- › Very compact dimensions
- › Side-mounted radiator (with cooling fan) positioned sideways instead of behind the bucket, permitting always an efficient engine cooling.
- › Full access to the machine's hydraulic and mechanical components.
- › Reduced dimensions of the front frame enabling a greater unloading distance.

## 4-WHEEL STEERING AND DRIVE

In the **VF 1.33B** the highest manoeuvrability in any situation is granted by the 4-wheel steering and drive that, together with a balanced ground load exerted by the wheels, allow at the same time full traction, extremely low tyre wearing and optimum operation without damage to surfaces (soil, asphalt, grassland, gravel).

## MAINTENANCE

One of **VF 1.33B** profitability key factor is represented by the machine extremely reduced downtime. Therefore it has been designed to allow routine inspections to be made quickly and easily: just operate a simple catch to open the engine hood and everything's within your reach.

## THE CABIN

**A place where a full-day work becomes possible.**

- › Easy-to-reach driver's position thanks to reduced height from ground and access without obstacles through a wide door.
- › Total visibility at 360 degrees.
- › Mobile rear window operated by dampers not exceeding the machine's profile even when open.
- › Large front windscreen with ample front and rear side glasses.
- › Man-sized driver's position.
- › Fully equipped instrument panel ergonomically positioned.
- › Excellent protection against external elements and environmental conditions.



## STANDARD EQUIPMENT

- › Acoustic reverse warning
- › Plug with key for fuel tank
- › Front bucket with bolted teeth
- › Backhoe bucket
- › ROPS/FOPS pressurized cab with heating system with front and rear windscreen wiper and windshield washer.
- › Tool box
- › Spare parts catalogue
- › Safety seat belt
- › Limited Slip differential on front and rear axles
- › Safety clamp for lifting cylinder
- › Safety clamp for backhoe lifting cylinder
- › Visual index for bucket position
- › Working lights
- › Tow hook
- › Yellow rotating beacon
- › Operation and maintenance manual
- › EEC homologation
- › Side rearview mirrors
- › Complete instrument dashboard

## OPTIONAL EQUIPMENT

- Loader**
  - › Mechanical or hydraulic quick coupling
  - › Mixing bucket
  - › Multi-purpose bucket (4x1)
  - › Arm with hydraulic shredder
  - › Device for ultra low speed
  - › Lifting forks
  - › Asphalt/cement planer
  - › Snow blower
  - › "V" type or "angle dozer" snow blade
  - › Angle-tilt dozer blade
  - › Hand-operated hammer
  - › Rotating brush
  - › Trencher
- Backhoe loader**
  - › Mechanical quick coupling
  - › Bucket with mechanical ejector
  - › Clamshell bucket
  - › Ditch cleaning bucket
  - › Backhoe bucket of different widths.
  - › Extensible dipperstick
  - › Hydraulic hammer
  - › Hydraulic shredder
  - › Hydraulic drilling auger



**Venieri** SPA  
EARTHMOVING MACHINES

Via Piratello, 106 - 48022 Lugo (RA) ITALY  
Tel. +39 0545 904411 Fax +39 0545 30389  
e-mail: info@vf-venieri.com [www.vf-venieri.com](http://www.vf-venieri.com)

**Spare Parts**  
Tel. +39 0545 904429 Fax +39 0545 24555  
e-mail: ricambi@vf-venieri.com



**VF 1.33B**  
THE COMPACT LOADER  
& BACKHOE  
LOADER  
INTERPRETED  
BY VENIERI.



The compact 4x4x4 VF 1.33B loader & backhoe loader has reached the goal to work as a skid loader or as a mini-excavator, but overcoming the limits of the single skid loader and of the single mini-excavator. In the loader or backhoe version, it represents the only solution which fully responds to Venieri philosophy in compact machinery: an unique product that's superior in terms of productivity, efficiency, flexibility and with low maintenance costs. The only tool carrier capable of performing in restricted areas or confined operating conditions, in:

- › **EARTHMOVING:** excavating, digging, breaking, filling, levelling etc.
- › **CONSTRUCTION:** transporting materials, opening trenches, grading, burying, levelling etc.
- › **ROADS AND PIPES:** removing road surfaces, spreading aggregate, opening and closing ditches for pipes and cables etc.
- › **PUBLIC WORKS, PARKS AND GARDENS:** Rooting, planting trees, clearing snow, gritting, cleaning road surfaces etc.

Agility and quickness, the ability to handle any kind of public works, high transfer speed, exceptionally compact dimensions and an unbeatable turning radius let you work without disturbing the environment around you, and make the **VF 1.33B** the essential and affordable solution for every kind of public works.

**Venieri**  
POWER TO EXCELLENCE



## TECHNICAL SPECIFICATIONS

### DIESEL ENGINE

Engine: 4 cylinder, indirect injection, water-cooled, paper dry filter.  
Emissioned engine according the CEE 97/68 – Stage IIIA.

Type .....	Perkins 404D - 22
Max. power .....	38 kW - 52 HP
Rated rpm .....	2.800
Net Power ISO/TR 14396 .....	36 kW - 49 HP
Net Power EEC/80/1269 .....	36 kW - 49 HP
Displacement .....	cm³ 2.216
Bore .....	mm 84
Stroke .....	mm 100

### ELECTRIC SYSTEM

Battery ..... 12 Volt  
Capacity ..... 60 Ah  
Alternator rating ..... 480 W  
Reverse warning ..... Standard  
Wiring according with ..... IP 67 - DIN 40050

### TRANSMISSION

Hydrostatic transmission with automatic power regulation and closed circuit with variable displacement pump and motor. Two forward/reverse speeds with single-lever electric control.

1 <sup>st</sup> gear km/h	forward	reverse
2 <sup>nd</sup> gear km/h	0÷8	0÷8
	0÷20	0÷20

### AXLES

Designed for heavy duties, all wheel-drive.  
Automatic self-locking differentials.  
Planetary final drives in each wheel.  
Front axle: steering and oscillating up to a total angle of 15°.  
Rear axle: steering and fixed to the frame.

### BRAKES

Service: hydraulic multi-disc working on the transmission shaft. Parking: roller-lock type on the split outlet hand-operated.

### TYRES

Standard ..... 10.0/75 x 15.3 - 8 pr.

### STEERING

Servo-assisted through hydraulic LOAD SENSING steering units.

Inner tyres turning radius.....	mm 800
Outer tyres turning radius.....	mm 2.150
Outer bucket turning radius .....	mm 2.700

### HYDRAULIC SYSTEM

LOAD SENSING gear pump with priority valve for the steering circuit.  
Modular three-element control valve for the loader, modular

six-element control valve for the backhoe.  
Double acting hydraulic cylinders.  
Hydraulic oil cooling radiator.  
Full-flow oil filter on the leakage pipe.

Max. flow .....	lt/1'	56
Loader relief valve pressure .....	bar	190
Steering relief valve pressure .....	bar	140
Lift cylinders .....	mm 90x455	
Bucket cylinder .....	mm 65x500	
Cycle time .....	sec	8,5

### Loader control

Single lever arm-control with 4-position lifting system and with 3-position bucket system.

### Backhoe control

Two levers for backhoe-control, "cloche" type.  
Two hydraulic-control independent stabilizers, hydraulically operated.  
Side translation with four hydraulic locking devices.

### SERVICE CAPACITIES

Engine .....	lt	10
Front axle + Gear box .....	lt	2,9
Rear axle .....	lt	2,24
Hydraulic circuit.....	lt	55
Brake system .....	lt	0,25
Fuel .....	lt	46
Water cooling .....	lt	14

### TECHNICAL FEATURES

#### Loader:

Standard bucket capacity .....	m³	0,40
Bucket width .....	mm	1.400
Breakout force .....	kg	2.560

#### Backhoe loader:

Type .....	VF	2,75
Standard bucket capacity .....	lt	45
Standard bucket width .....	mm	300
Dipper stick max. penetration capacity .....	kg	1.400
Max breakout force on the bucket tip .....	kg	2.600
Hydraulic lifting capacity on the bucket pin up. ....	kg	700
Rotation .....	°	180°
A - Max. digging depth .....	mm	2.750
(Telesc./optional) .....	mm	3.250
B - Standard digging depth .....	mm	2.600
(Telesc./optional).....	mm	3.100

### DIMENSIONS AND WEIGHTS

Max. length in transfer (loader) .....	mm	3.400
Max. length in transfer (backhoe loader) .....	mm	3.750
Max. width in transfer .....	mm	1.400
Width across tyres .....	mm	1.320
Tracks width .....	mm	1.105
Ground clearance .....	mm	270
Standard weight in running order (loader) .....	kg	2.850
Standard weight in running order (backhoe loader). ....	kg	3.000
Max permissible weight. ....	kg	4.000

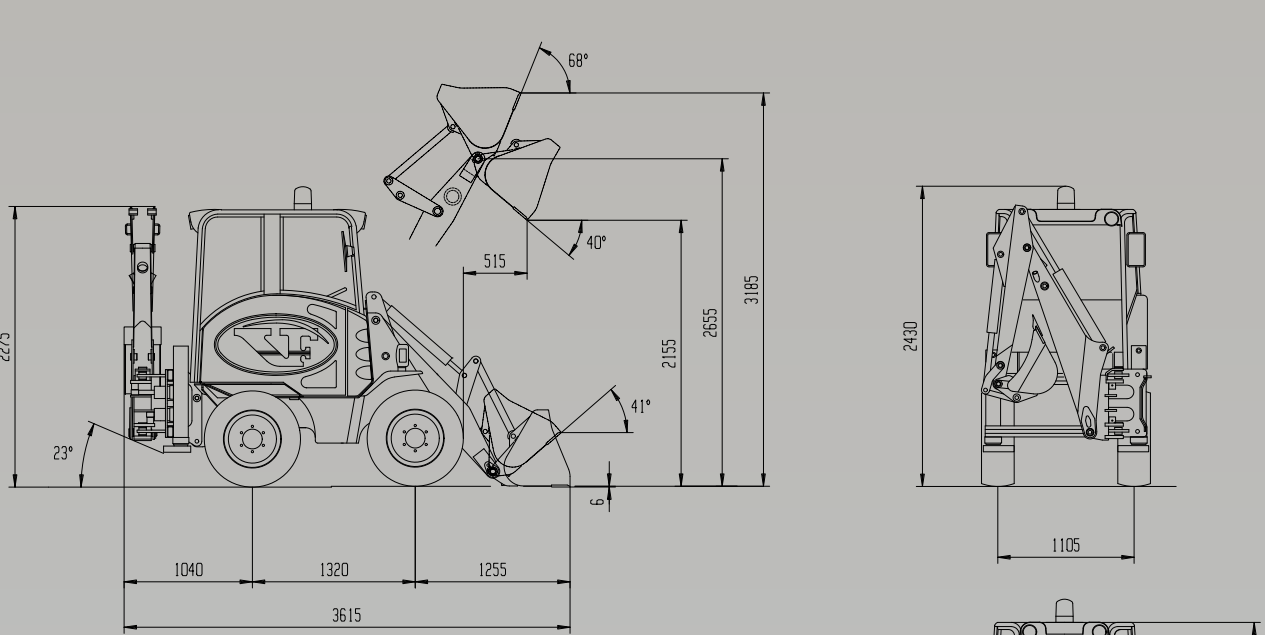
The illustrations on the present folder do not necessarily show the product standard version. Data and dimensions described in this folder are not binding. Venieri reserves the right of carrying out possible changes at any time and without previous notice because of its policy of steady development and improvement of the products.



**Perkins**  
**Rexroth**  
**Bosch Group**

### DIESEL ENGINE

The Venieri VF 1.33B fits a worldwide reputed engine made by **Perkins**, leading manufacturer of diesel engines. Thousands of testing hours under every possible climatic condition grant an engine assuring constantly affordable and reliable performances. Built to **Venieri's** own specifications, the 4-cylinder engine meets all requirements on emissions and offers exceptional power and torque, allowing either gradual and high-output operation.

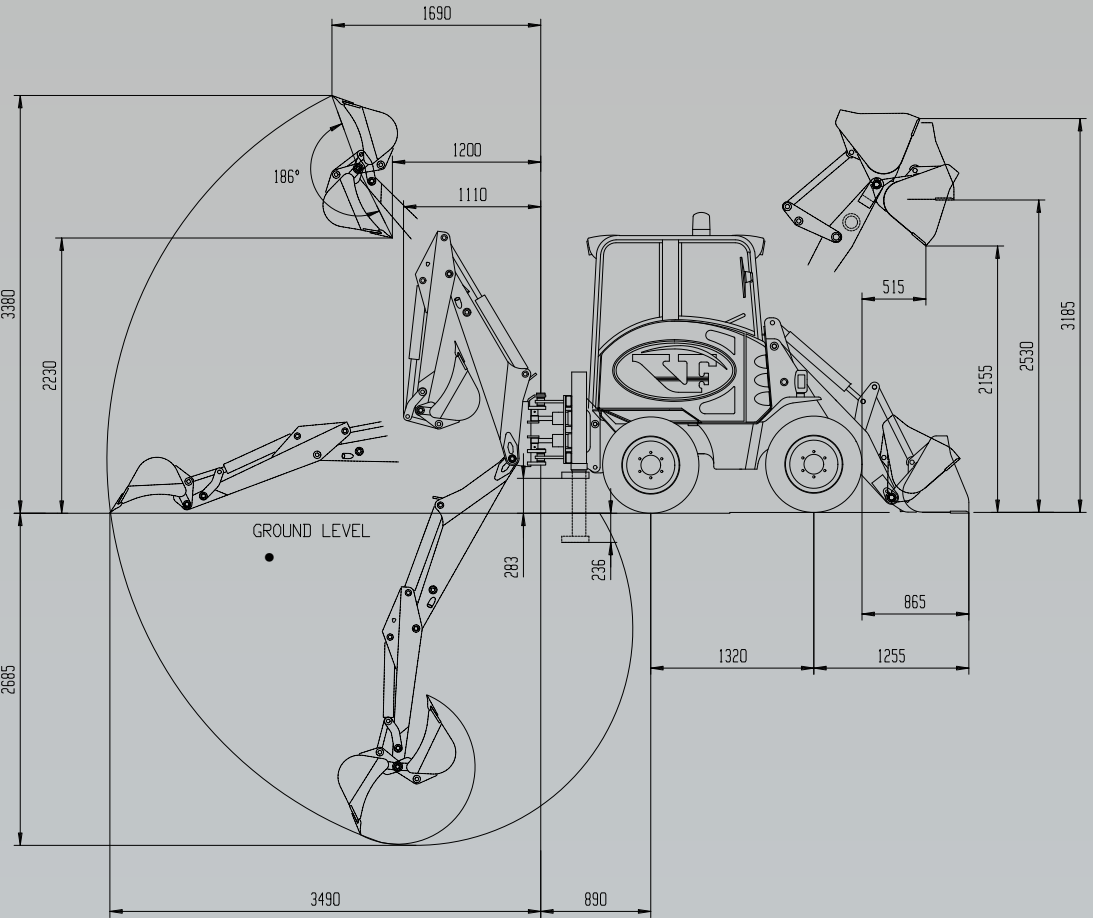


### Loading bucket (kg)

Stating tipping load - Full turn	1.500
Payload (50%)	750

### Loading fork (kg) – centre of gravity 500 mm

Stating tipping load - Full turn	1.200
Payload EN 474-3 (80%)	950
Payload EN 474-3 (60 %)	750
Payload DIN 24094 (50 %)	600



**Venieri**  
**1.33B** 4WS LOADER  
& BACKHOE LOADER