



TM

**VENIERI**  
SPA

**11.63B**

**12.63B**

**13.63B**

**WHEEL LOADER**







## 100% VENIERI DESIGN

In the new machines our **Venieri Design Center** follows the “family feelings” but introduces significant **stylistic innovations**.



## BREATHTAKING VIEW

The new ROPS/FOPS Level II cabin design guarantees **360° visibility**, for **maximum visual control and highest level of safety**.



## 4K LINKAGE

New completely redesigned linkage to the latest state of the art, for **maximum breakout force**.



## BE COOL

The **brand new ventilation system** guarantees operator comfort. You can choose between the **automatic climate control** or the **air conditioner**, thus obtaining the **perfect temperature in the cabin**.



## SILENCE, PLEASE

The choice of new sound absorbent materials and special “anti vibration” rubber shock absorbers **allows a radical noise reduction in cabin, for maximum comfort** for the operator.



## SAFETY IS OUR PRIORITY

The **negative parking brake** is integrated into the rear axle for maximum safety in all operating situations.





## NEW DEUTZ TIER 4i/STAGE IIIB ENGINE

The **new Deutz engine** complies with the **latest emission standards** delivering **high torque** at low rpm.



## DOUBLE ATTENTION FOR FUEL SAVING

The new electrically controlled **dual speed cooling fan**, adjusts the rotation speed according to the working conditions, **reducing fuel consumption and noise**.



**AIR CYCLONE  
PRECLEANER**

## ALWAYS CLEAN AIR

The new air cleaner system offers a **two stage filtration**, through **high efficiency primary filters** and **safety filters**, that could be integrate with cyclon pre-filter (optional) for maximum engine protection.



## BUILT FOR POWER, DESIGNED FOR AGILITY

The **special layout of the counterweight** grants **perfect maneuverability**, **maximum drive angle** and protection of the integrated rear lights in narrow spaces.



## TOTAL STABILITY

**Oscillating rear axle** fixed to the frame with **maintenance-free** supports.

# 11.63B

## WHEEL LOADER "Z" LINKAGE



### DIESEL ENGINE

4-cylinder in-line engine, turbocharged, direct-injection common rail (DCR®), cooled exhaust gas recirculation, water-cooled, dry filtration, and particle filter with active regeneration. Emissioned according to CEE 97/68 – Stage IIIB/Tier4i.

|                        |                  |
|------------------------|------------------|
| Type                   | Deutz TCD 4.1 L4 |
| Max. power             | 121 kW - 164 HP  |
| Rated rpm              | 2.200            |
| Power ISO/TR 14396     | 115 kW - 156 HP  |
| Power EEC 80/1269      | 115 kW - 156 HP  |
| Economic working range | rpm 1400 - 1800  |
| Max. torque            | Nm 609           |
| Bore                   | mm 101           |
| Stroke                 | mm 126           |
| Displacement           | cm³ 4.038        |



### ELECTRIC SYSTEM

|                     |                   |
|---------------------|-------------------|
| Battery             | 12 Volt           |
| Capacity EN 60095-1 | 180 Ah - 1100 A   |
| Alternator rating   | 95 A              |
| Reverse warning     | Standard          |
| Wiring according to | IP 67 - DIN 40050 |



### TRANSMISSION

Hydrostatic transmission with automatic power regulation and closed circuit with variable displacement pumps and two motors. Three forward/reverse speed with fully automatic gear shift and single-lever control. Gear box with automatic gear and clutch to disconnect of one motor during travelling speed.

| Work speed                | Forward | Reverse |
|---------------------------|---------|---------|
| 1 <sup>st</sup> gear km/h | 0÷8     | 0÷8     |
| 2 <sup>nd</sup> gear km/h | 0÷17    | 0÷17    |
| 3 <sup>rd</sup> gear km/h | 0÷40    | 0÷40    |



### AXLES

Two heavy duty axles with planetary final drivers in each wheel. Rigid drive axle on front chassis section. Oscillating drive axle on rear chassis section, up to a total angle of 20°. Transfer gear box transferring movement directly both to rear and front axle through transmission cardan shaft. Self-locking limited slip differential present on front axle, optional on rear one.



### BRAKES

Service: hydraulic multi-disc oil brake on each wheel.  
Parking: negative hydraulic on rear, electrically activated.



### TYRES

|          |                                     |
|----------|-------------------------------------|
| Standard | 20.5 R 25                           |
| Optional | 20.5 - 25 / 555/70 R24 / 620/70 R26 |



### STEERING

Servo-assisted steering through **LOAD SENSING** hydraulic power steering with separated pump.

|                                 |          |
|---------------------------------|----------|
| Total steering angle            | 80°      |
| Inner tyres turning radius      | mm 3.130 |
| External turning radius         | mm 5.500 |
| External bucket turning radius* | mm 6.050 |

\* Bucket on traveling condition



### HYDRAULIC SYSTEM

Single variable displacement piston pump with power control for the loader, second gear pump for the steering circuit. Selector switch for controlling arm movement speed. Modular 2-element control valve. Double acting hydraulic cylinders. Hydraulic oil cooling radiator with fan having a double speed rotation. Full-flow oil filter on the leakage pipe. Single servolever arm-control with 4-positions lifting system and with 3-positions bucket system.

|                                |       |         |
|--------------------------------|-------|---------|
| Max flow                       | lt/1' | 160     |
| Loader relief valve pressure   | bar   | 280     |
| Steering relief valve pressure | bar   | 175     |
| Lift cylinder                  | mm    | 110x750 |
| Bucket cylinder                | mm    | 130x455 |
| Lifting time (full)            | sec.  | 5,2     |
| Lowering time (empty)          | sec.  | 4,3     |
| Unloading time                 | sec.  | 1,7     |
| Total time of cycle            | sec.  | 11,2    |



### SERVICE CAPACITIES

|                   |    |      |
|-------------------|----|------|
| Engine            | lt | 11,5 |
| Front axle        | lt | 20,5 |
| Rear axle         | lt | 20,5 |
| Gearbox           | lt | 3,5  |
| Hydraulic circuit | lt | 222  |
| Fuel              | lt | 268  |
| Water cooling     | lt | 30   |



### TECHNICAL FEATURES

|                                 |    |        |
|---------------------------------|----|--------|
| Standard bucket capacity        | m³ | 2,2    |
| Bucket width                    | mm | 2.480  |
| Straight static tipping load    | kg | 9.700  |
| Full turned 40° tipping load    | kg | 8.600  |
| Lifting capacity at max. height | kg | 8.900  |
| Dump clearance                  | mm | 3.850  |
| Dump height at 42°              | mm | 2.950  |
| Reach at 42°                    | mm | 950    |
| Breakout force                  | kg | 12.800 |

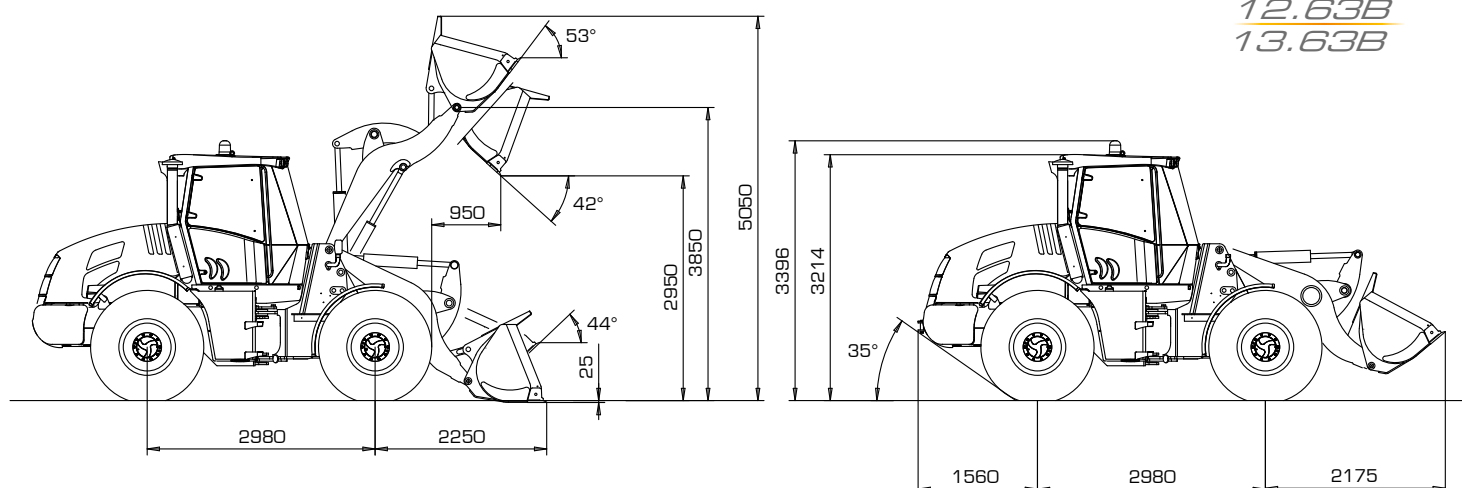


### DIMENSIONS AND WEIGHT

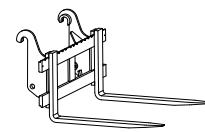
|                                 |    |        |
|---------------------------------|----|--------|
| Max lenght in transfer position | mm | 6.715  |
| Max width in transfer position  | mm | 2.480  |
| Max Height                      | mm | 3.214  |
| Track width                     | mm | 1.850  |
| Overall tyre width              | mm | 2.380  |
| Wheel base                      | mm | 2.980  |
| Ground clearance                | mm | 455    |
| Standard operating weight       | kg | 12.300 |
| Max permissible weight          | kg | 13.450 |

### dB NOISE LEVEL

|  |       |     |
|--|-------|-----|
| ISO 6396 - LpA (interior pressure level) | dB(A) | 69  |
| 2000/14/CE - LwA (exterior power level)  | dB(A) | 102 |


**UNIVERSAL  
BUCKET**

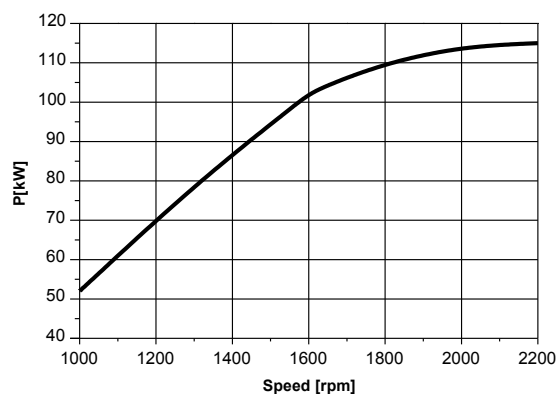
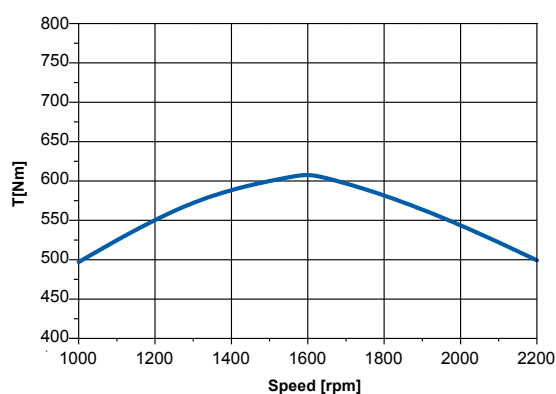
**ROCK**

**OVERSIZE**

**FORKS**

**PERFORMANCE DATA**

|                                       |                |        |        |        |
|---------------------------------------|----------------|--------|--------|--------|
| Full load bucket capacity (SAE)       | m <sup>3</sup> | 2,2    | 1,7    | 2,5    |
| Bucket width                          | mm             | 2.480  | 2.480  | 2.540  |
| Bucket weight                         | kg             | 800    | 700    | 850    |
| Max operative height                  | mm             | 5.050  | 5.000  | 5.125  |
| Height to hinge pin                   | mm             | 3.850  | 3.850  | 3.850  |
| Dump angle                            | °              | 42°    | 42°    | 42°    |
| Dump height                           | mm             | 2.950  | 3.000  | 2.900  |
| Dump clearance                        | mm             | 950    | 894    | 1.006  |
| Dump distance                         | mm             | 2.005  | 1.949  | 2.061  |
| Max. dump distance                    | kg             | 9.700  | 10.000 | 9.200  |
| Bucket static tipping load, straight  | kg             | 8.600  | 8.800  | 8.100  |
| Bucket static tipping load, full turn | kg             | 12.800 | 13.900 | 11.900 |
| Breakout force                        | mm             | 6.715  | 6.665  | 6.790  |
| Total displacement length             | mm             | 6.050  | 6.025  | 6.131  |
| External bucket turning radius        | kg             | 12.300 | 12.200 | 12.350 |
| Standard operating weight             | kg             |        |        | 6.400  |
| Payload EN 474-3 (80%) [•]            | kg             |        |        | 5.120  |
| Payload EN 474-3 (60%) [•]            | kg             |        |        | 3.840  |
| Payload DIN 24094 (50%)               | kg             |        |        | 3.200  |

[•] Loading center 500 mm

**POWER**

**TORQUE**




# 12.63B

## WHEEL LOADER PARALLEL LINKAGE



### DIESEL ENGINE

4-cylinder in-line engine, turbocharged, direct-injection common rail (DCR®), cooled exhaust gas recirculation, water-cooled, dry filtration, and particle filter with active regeneration. Emissioned according to CEE 97/68 – Stage IIIB/Tier4i.

|                        |                  |
|------------------------|------------------|
| Type                   | Deutz TCD 4.1 L4 |
| Max. power             | 121 kW - 164 HP  |
| Rated rpm              | 2.200            |
| Power ISO/TR 14396     | 115 kW - 156 HP  |
| Power EEC 80/1269      | 115 kW - 156 HP  |
| Economic working range | rpm 1400 - 1800  |
| Max. torque            | Nm 609           |
| Bore                   | mm 101           |
| Stroke                 | mm 126           |
| Displacement           | cm³ 4.038        |



### ELECTRIC SYSTEM

|                     |                 |
|---------------------|-----------------|
| Battery             | 12 Volt         |
| Capacity EN 60095-1 | 180 Ah - 1100 A |
| Alternator rating   | 95 A            |
| Reverse warning     | Standard        |
| Wiring according to | IP 67 DIN 40050 |



### TRANSMISSION

Hydrostatic transmission with automatic power regulation and closed circuit with variable displacement pumps and two motors. Three forward/reverse speed with fully automatic gear shift and single-lever control. Gear box with automatic gear and clutch to disconnect of one motor during travelling speed.

| Work speed                | Forward | Reverse |
|---------------------------|---------|---------|
| 1 <sup>st</sup> gear km/h | 0÷8     | 0÷8     |
| 2 <sup>nd</sup> gear km/h | 0÷17    | 0÷17    |
| 3 <sup>rd</sup> gear km/h | 0÷40    | 0÷40    |



### AXLES

Two heavy duty axles with planetary final drivers in each wheel. Rigid drive axle on front chassis section. Oscillating drive axle on rear chassis section, up to a total angle of 20°. Transfer gear box transferring movement directly both to rear and front axle through transmission cardan shaft. Self-locking limited slip differential present on front axle, optional on rear one.



### BRAKE

Service: hydraulic multi-disc oil brake on each wheel.  
Parking: negative hydraulic on rear, electrically activated.



### TYRES

|          |                                     |
|----------|-------------------------------------|
| Standard | 20.5 R 25                           |
| Optional | 20.5 - 25 / 555/70 R24 / 620/70 R26 |



### STEERING

Servo-assisted steering through **LOAD SENSING** hydraulic steering power with separated pump.

|                                 |          |
|---------------------------------|----------|
| Total steering angle            | 80°      |
| Inner tyres turning radius      | mm 3.130 |
| External turning radius         | mm 5.500 |
| External bucket turning radius* | mm 6.050 |

\* Bucket on traveling condition



### HYDRAULIC SYSTEM

Single variable displacement piston pump with power control for the loader, second gear pump for the steering circuit. Selector switch for controlling arm movement speed. Modular 2-element control valve. Double acting hydraulic cylinders. Hydraulic oil cooling radiator with fan having a double speed rotation. Full-flow oil filter on the leakage pipe. Single servolever arm-control with 4-positions lifting system and with 3-positions bucket system.

|                                |           |
|--------------------------------|-----------|
| Max flow                       | lt/1' 160 |
| Loader relief valve pressure   | bar 280   |
| Steering relief valve pressure | bar 175   |
| Lift cylinder                  | mm110x769 |
| Bucket cylinder                | mm 80x850 |
| Lifting time (full)            | sec. 5.1  |
| Lowering time (empty)          | sec. 4,3  |
| Unloading time                 | sec. 2,1  |
| Total time of cycle            | sec. 11,5 |



### SERVICE CAPACITIES

|                   |         |
|-------------------|---------|
| Engine            | lt 11,5 |
| Front axle        | lt 20,5 |
| Rear axle         | lt 20,5 |
| Gearbox           | lt 3,5  |
| Hydraulic circuit | lt 222  |
| Fuel              | lt 268  |
| Water cooling     | lt 30   |



### TECHNICAL FEATURES

|                                 |          |
|---------------------------------|----------|
| Standard bucket capacity        | m³ 2,2   |
| Bucket width                    | mm 2.480 |
| Straight static tipping load    | kg 9.100 |
| Full turned 40° tipping load    | kg 8.000 |
| Lifting capacity at max. height | kg 7.400 |
| Dump clearance                  | mm 4.000 |
| Dump height at 42°              | mm 3.100 |
| Reach at 42°                    | mm 1.050 |
| Breakout force                  | kg 9.500 |

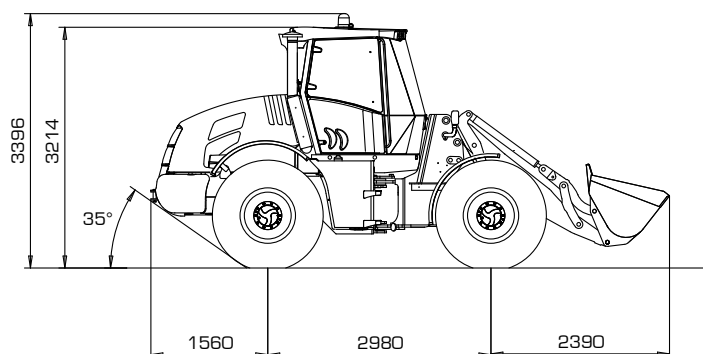
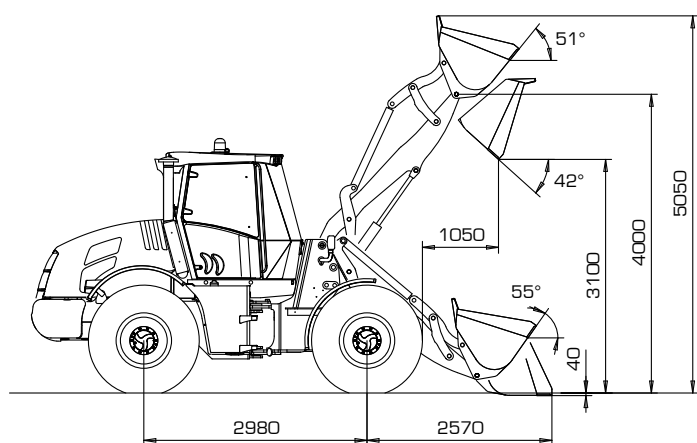


### DIMENSION AND WEIGHT

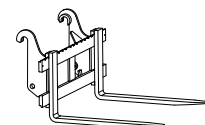
|                                 |           |
|---------------------------------|-----------|
| Max lenght in transfer position | mm 6.930  |
| Max width in transfer position  | mm 2.480  |
| Max Height                      | mm 3.214  |
| Track width                     | mm 1.850  |
| Overall tyre width              | mm 2.380  |
| Wheel base                      | mm 2.980  |
| Ground clearance                | mm 455    |
| Standard operating weight       | kg 12.500 |
| Max permissible weight          | kg 13.450 |

### dB NOISE LEVEL

|  |           |
|--|-----------|
| ISO 6396 - LpA (interior pressure level) | dB(A) 69  |
| 2000/14/CE - LwA (exterior power level)  | dB(A) 102 |


**UNIVERSAL  
BUCKET**

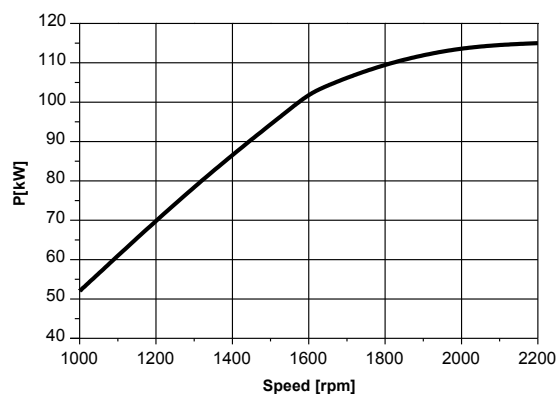
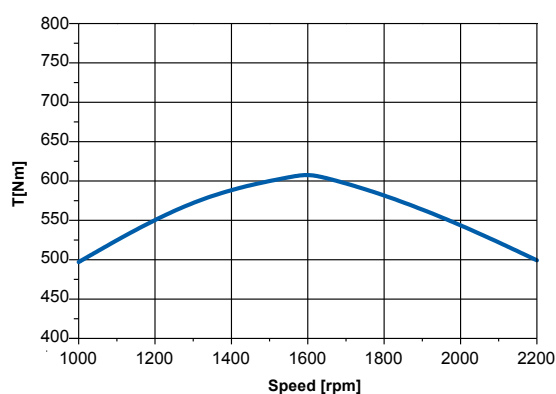
**ROCK**

**OVERSIZE**

**FORKS**

**PERFORMANCE DATA**

|                                       |                |        |        |        |
|---------------------------------------|----------------|--------|--------|--------|
| Full load bucket capacity (SAE)       | m <sup>3</sup> | 2,2    | 1,7    | 2,5    |
| Bucket width                          | mm             | 2.480  | 2.480  | 2.540  |
| Bucket weight                         | kg             | 800    | 700    | 850    |
| Max operative height                  | mm             | 5.050  | 5.000  | 5.125  |
| Height to hinge pin                   | mm             | 4000   | 4.000  | 4.000  |
| Dump angle                            | °              | 42°    | 42°    | 42°    |
| Dump height                           | mm             | 3.100  | 3.200  | 3.100  |
| Dump clearance                        | mm             | 1050   | 938    | 1.050  |
| Dump distance                         | mm             | 2.175  | 2.063  | 2.175  |
| Max. dump distance                    | kg             | 9.100  | 9.400  | 8.800  |
| Bucket static tipping load, straight  | kg             | 8.000  | 8.400  | 7.800  |
| Bucket static tipping load, full turn | kg             | 9.500  | 11.176 | 9.500  |
| Breakout force                        | mm             | 6.930  | 6.805  | 7.005  |
| Total displacement length             | mm             | 6.050  | 6.000  | 6.080  |
| External bucket turning radius        | kg             | 12.500 | 12.400 | 12.550 |
| Standard operating weight             | kg             |        |        | 6.500  |
| Payload EN 474-3 (80%) [•]            | kg             |        |        | 5.200  |
| Payload EN 474-3 (60%) [•]            | kg             |        |        | 3.900  |
| Payload DIN 24094 (50%)               | kg             |        |        | 3.250  |

[•] Loading center 500 mm

**POWER**

**TORQUE**


# 13.63B

## WHEEL LOADER "Z" LINKAGE



### DIESEL ENGINE

6-cylinder in-line engine, turbocharged, direct-injection common rail (DCR®), cooled exhaust gas recirculation, water-cooled, dry filtration, and particle filter with active regeneration. Emissioned according to CEE 97/68 - Stage IIIB/Tier4i.

|                        |                  |
|------------------------|------------------|
| Type                   | Deutz TCD 6.1 L6 |
| Max. power             | 135 kW - 184 HP  |
| Rated rpm              | 2.200            |
| Power ISO/TR 14396     | 129 kW - 175 HP  |
| Power EEC 80/1269      | 129 kW - 175 HP  |
| Economic working range | rpm 1200 - 1700  |
| Max. torque            | Nm 750           |
| Bore                   | mm 101           |
| Stroke                 | mm 126           |
| Displacement           | cm³ 6.057        |



### ELECTRIC SYSTEM

|                     |                 |
|---------------------|-----------------|
| Battery             | 12 Volt         |
| Capacity EN 60095-1 | 180 Ah - 1100 A |
| Alternator rating   | 95 A            |
| Reverse warning     | Standard        |
| Wiring according to | IP 67 DIN 40050 |



### TRANSMISSION

Hydrostatic transmission with automatic power regulation and closed circuit with variable displacement pumps and two motors. Three forward/reverse speed with fully automatic gear shift and single-lever control. Gear box with automatic gear and clutch to disconnect of one motor during travelling speed.

| Work speed                | Forward | Reverse |
|---------------------------|---------|---------|
| 1 <sup>st</sup> gear km/h | 0÷8     | 0÷8     |
| 2 <sup>nd</sup> gear km/h | 0÷17    | 0÷17    |
| 3 <sup>rd</sup> gear km/h | 0÷40    | 0÷40    |



### AXLES

Two heavy duty axles with planetary final drivers in each wheel. Rigid drive axle on front chassis section. Oscillating drive axle on rear chassis section, up to a total angle of 20°. Transfer gear box transferring movement directly both to rear and front axle through transmission cardan shaft. Self-locking limited slip differential present on front axle, optional on rear one.



### BRAKES

Service: hydraulic multi-disc oil brake on each wheel.  
Parking: negative hydraulic on rear, electrically activated.



### TYRES

|          |                        |
|----------|------------------------|
| Standard | 20.5 R25               |
| Optional | 20.5 - 25 / 620/70 R26 |



### STEERING

Servo-assisted steering through **LOAD SENSING** hydraulic steering power with separated pump.

|                                 |          |
|---------------------------------|----------|
| Total steering angle            | 80°      |
| Inner tyres turning radius      | mm 3.130 |
| External turning radius         | mm 5.500 |
| External bucket turning radius* | mm 6.150 |

\* Bucket on traveling condition



### HYDRAULIC SYSTEM

Single variable displacement piston pump with power control "P.C.S." for the loader, second gear pump for the steering circuit. Selector switch to control arm movement speed. Modular 2-element control valve. Double acting hydraulic cylinders. Hydraulic oil cooling radiator with fan having a double speed of rotation. Full-flow oil filter on the leakage pipe. Single servo-lever-arm-control with 4-position lifting system and with 3-position bucket system.

|                                |           |      |
|--------------------------------|-----------|------|
| Max flow                       | lt/1'     | 195  |
| Loader relief valve pressure   | bar       | 280  |
| Steering relief valve pressure | bar       | 175  |
| Lift cylinder                  | mm120x750 |      |
| Bucket cylinder                | mm130x485 |      |
| Lifting time (full)            | sec.      | 5,0  |
| Lowering time (empty)          | sec.      | 1,7  |
| Unloading time                 | sec.      | 4,1  |
| Total time of cycle            | sec.      | 10,8 |



### SERVICE CAPACITIES

|                   |    |      |
|-------------------|----|------|
| Engine            | lt | 15,5 |
| Front axle        | lt | 20,5 |
| Rear axle         | lt | 20,5 |
| Gearbox           | lt | 3,5  |
| Hydraulic circuit | lt | 222  |
| Fuel              | lt | 268  |
| Water cooling     | lt | 30   |



### TECHNICAL FEATURES

|                                 |    |        |
|---------------------------------|----|--------|
| Standard bucket capacity        | m³ | 2,7    |
| Bucket width                    | mm | 2.540  |
| Straight static tipping load    | kg | 10.800 |
| Full turned 40° tipping load    | kg | 9.600  |
| Lifting capacity at max. height | kg | 10.500 |
| Dump clearance                  | mm | 3.950  |
| Dump height at 42°              | mm | 3.050  |
| Reach at 42°                    | mm | 1.050  |
| Breakout force                  | kg | 12.000 |



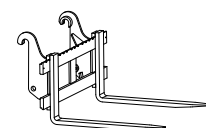
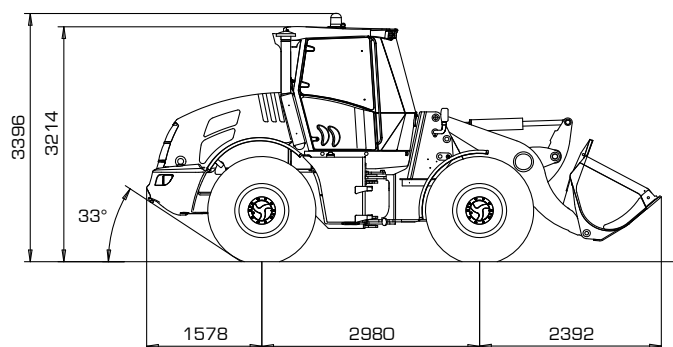
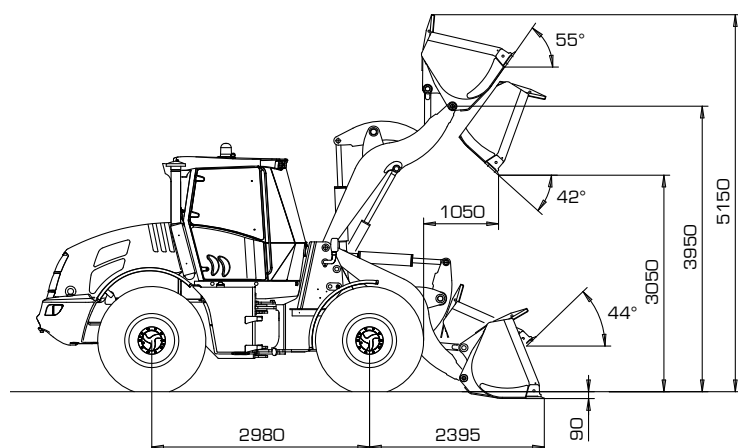
### DIMENSIONS AND WEIGHT

|                                 |    |        |
|---------------------------------|----|--------|
| Max lenght in transfer position | mm | 6.950  |
| Max width in transfer position  | mm | 2.540  |
| Max Height                      | mm | 3.214  |
| Track width                     | mm | 1.850  |
| Overall tyre width              | mm | 2.380  |
| Wheel base                      | mm | 2.980  |
| Ground clearance                | mm | 455    |
| Standard operating weight       | kg | 13.700 |
| Max permissible weight          | kg | 14.150 |

### dB NOISE LEVEL

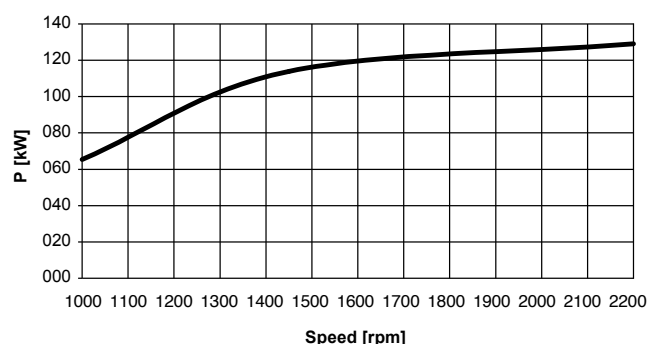
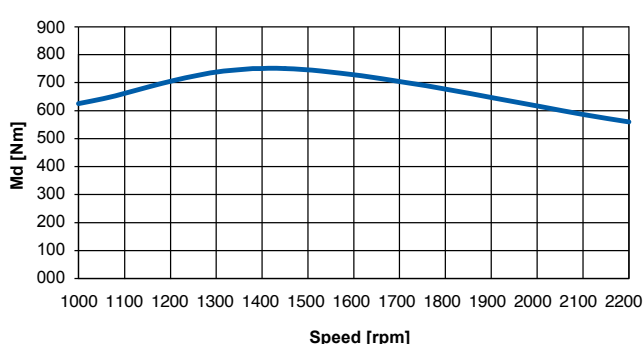
|  |       |     |
|--|-------|-----|
| ISO 6396 - LpA (interior pressure level) | dB(A) | 68  |
| 2000/14/CE - LwA (exterior power level)  | dB(A) | 101 |




**PERFORMANCE DATA**
**UNIVERSAL  
BUCKET**
**ROCK**
**OVERSIZE**
**FORKS**

|                                       |                |        |        |        |       |
|---------------------------------------|----------------|--------|--------|--------|-------|
| Full load bucket capacity (SAE)       | m <sup>3</sup> | 2,7    | 2,2    | 3,0    |       |
| Bucket width                          | mm             | 2.540  | 2.540  | 2.540  |       |
| Bucket weight                         | kg             | 900    | 850    | 950    |       |
| Max operative height                  | mm             | 5.150  | 5.100  | 5.225  |       |
| Height to hinge pin                   | mm             | 3950   | 3.950  | 3.950  |       |
| Dump angle                            | °              | 42°    | 42°    | 42°    |       |
| Dump height                           | mm             | 3.050  | 3.100  | 3.017  |       |
| Dump clearance                        | mm             | 1050   | 994    | 1.087  |       |
| Dump distance                         | mm             | 2.025  | 1.969  | 2.062  |       |
| Max. dump distance                    | kg             | 10.800 | 11.000 | 10.400 |       |
| Bucket static tipping load, straight  | kg             | 9.600  | 9.700  | 9.200  |       |
| Bucket static tipping load, full turn | kg             | 12.000 | 12.973 | 11.478 |       |
| Breakout force                        | mm             | 6.950  | 6.825  | 7.025  |       |
| Total displacement lenght             | mm             | 6.150  | 6.125  | 6.200  |       |
| External bucket turning radius        | kg             | 13.700 | 13.650 | 13.750 |       |
| Standard operating weight             | kg             |        |        |        | 7.000 |
| Payload EN 474-3 (80%) [•]            | kg             |        |        |        | 5.600 |
| Payload EN 474-3 (60%) [•]            | kg             |        |        |        | 4.200 |
| Payload DIN 24094 (50%)               | kg             |        |        |        | 3.500 |

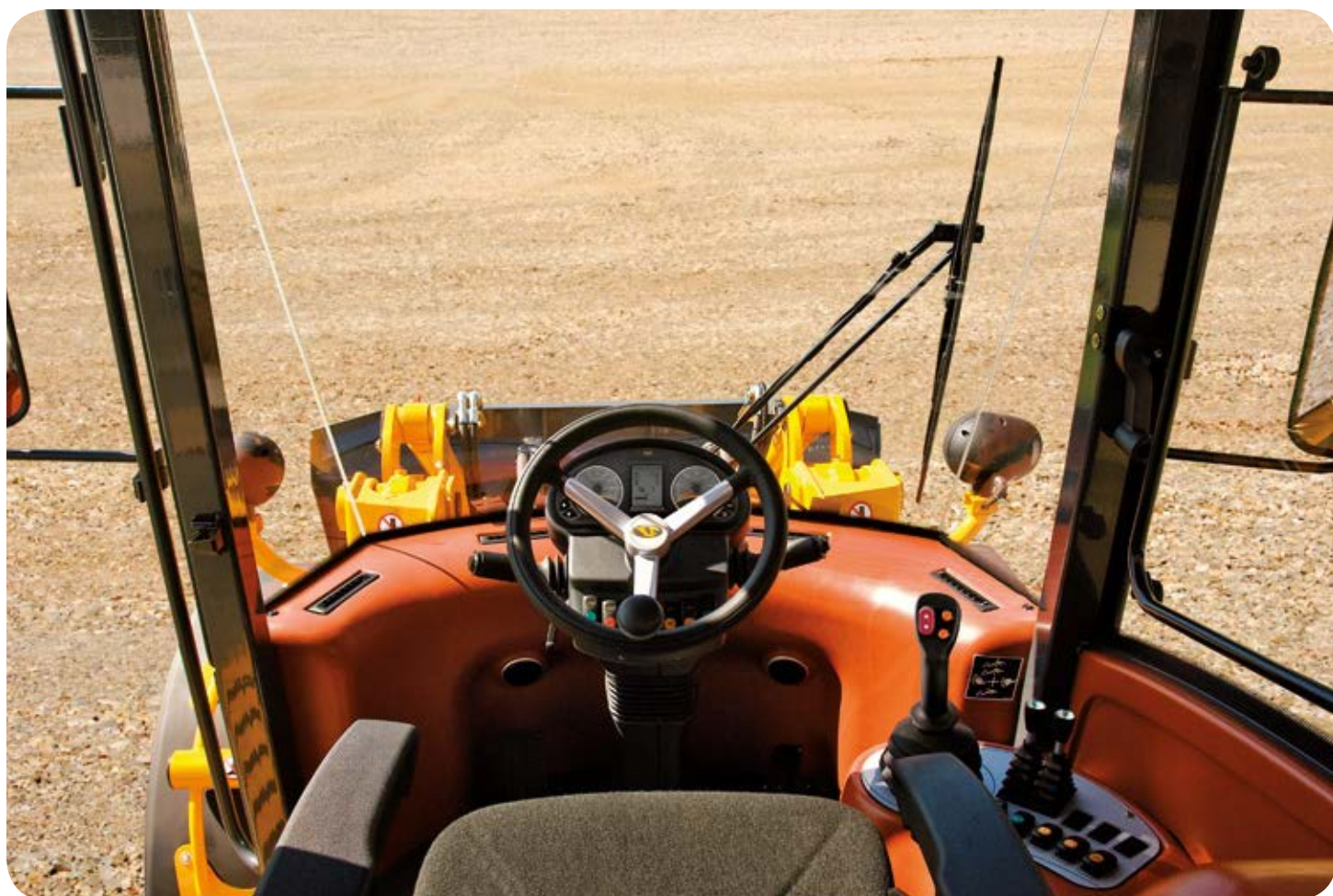
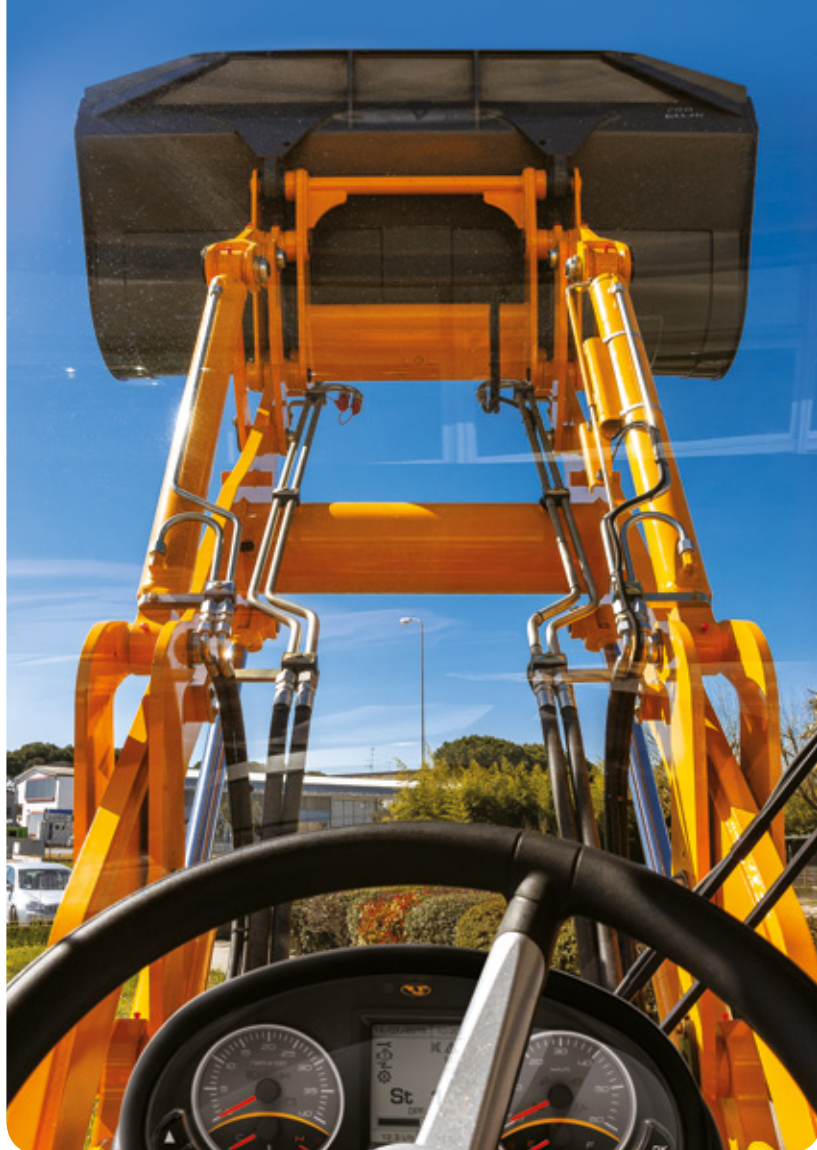
[•] Loading center 500 mm

**POWER**

**TORQUE**


# THE NEW CABIN

## A BREATHTAKING VIEW. AUTOMOTIVE COMFORT.

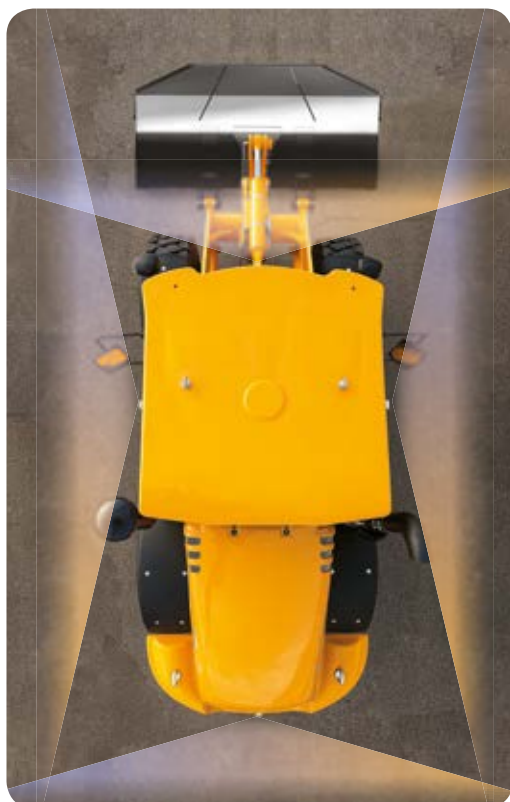
Getting on board, is certainly the best way to appreciate the **ergonomics and comfort** of the cabin. We know that **a spacious and comfortable working environment** reduces stress and increases productivity: therefore in the cabin you will find **wide interior space, on hand controls**, with optimized ergonomics and **excellent 360° visibility** and with all available equipments. Immediately after having switched on the engine, you can appreciate the **great soundproofing** identifying the cabs of Venieri wheel loaders.







We have **minimized "blind spots"**  
for **superb visibility** in all working conditions.



## THE BIG BROTHER.

You'll have eyes everywhere. An advanced **camera system installed on all 4 sides of the cabin** (optional) allows you to keep **everything under control** could recording everything that happens around you. For Venieri the operator protection for us comes first!





## FINALLY BEAUTY MEETS FUNCTIONALITY.

With the new cab of VF 11.63B, 12.63B, 13.63B the Venieri Design Center tried to merge **functionality** and **style** for maximum simplicity use. The result is a cabin whose design is optimally suited to any **operator's necessity**. Spacious, efficient and ergonomic: it offers ideal conditions for a **comfortable and productive work**.



## ARTIFICIAL INTELLIGENCE.

**Advanced man/machine interface**, for constant **monitoring of machine's performances**, communicating **each diagnosis** to the operator by a large and detailed LCD screen positioned in the dashboard.

|            |       |
|------------|-------|
| 19/07/2016 | 10:20 |
| St 1       | DPF:  |
| 123        | 123 h |
| 123        | 123 h |
| 123        | 123 h |
| 12.3 l/h   | 123 h |

LAYOUT A

|                       |       |
|-----------------------|-------|
| 19/07/2016            | 10:30 |
| Total working hours   | 123 h |
| Partial working hours | 123 h |
| 12.3 l/h              | 123 h |

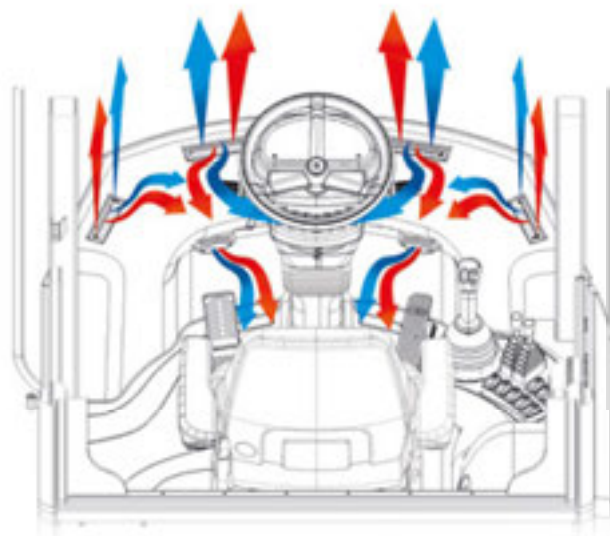
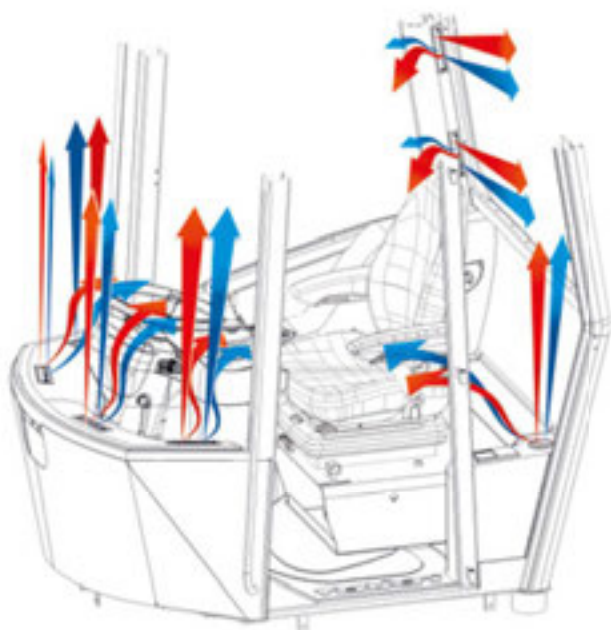
LAYOUT B

|                           |          |
|---------------------------|----------|
| 19/07/2016                | 10:40    |
| Average consumption       | 123 l/h  |
| Total consumption         | 123 l    |
| Instantaneous consumption | 12.3 l/h |
| 12.3 l/h                  | 123 h    |

LAYOUT C

|                 |       |
|-----------------|-------|
| 19/07/2016      | 10:50 |
| Remaining Hours | 123   |
| 12.3 l/h        | 123 h |

LAYOUT D



## BE COOL

The entire ventilation system has been redesigned for the maximum comfort. With a single dashboard, the operator can choose the ideal temperature, ensuring **maximum working comfort**. The VF 11.63B, VF12.63B and VF13.63B can be equipped with **Venieri Climatronic** (optional). You have only to set the temperature, and the Venieri Climatronic will keep everything under control.



**Bluetooth™**

## BLUETOOTH SOUND SYSTEM SPEAKER

The VENIERI Bluetooth™ radio (optional) allows you to operate in absolute security, ensuring a perfect hands-free connection on your wheel loader.

LUMBAR  
SETTING

LUMBAR  
SETTING

SETTING ONLY  
ON INCLINATION PILLOW

PILLOW SETTING  
FORWARD/REVERSE



## ENJOY THE SHOW.

The **driver's seat** is equipped with the **most advanced solutions in terms of comfort** for maximum operational efficiency. Also the seat with pneumatic suspension, is available, with anti-shock system, additional regulations on the pillow and lumbar adjustment (optional).

# CLASS EVOLUTION.

## CLEAN POWER, ZERO CONSUMPTION. NEW DEUTZ TIER 4/STAGE IIIB ENGINES

The VF 11.63B, VF 12.63B and VF 13.63B is powered by the **new Deutz TCD 4.1 L04 e TCD 6.1 L6** four cylinder 4038cm<sup>3</sup> and six cylinder 6057 cm<sup>3</sup> unit **awarded as best engine in his class**. The impressive performance, reliability and durability distinguishing this engine have been made possible by adopting the most advanced technology, such as: **electronically controlled Common Rail injection, turbocharger with intercooler**.

Due to **gas after-treatment system of waste (EAT)** such motors ensure **optimum performances** guaranteeing a **fuel consumption and operating costs**. Excellent cold start performances even in extreme conditions.

The size and design of the engines will remain identical in the transition to Stage V, thanks to profound design analysis. A version without the post-treatment of exhaust gas system (EAT) is available as an option for less regulated markets.

### › COMMON RAIL

In Deutz engines, injection pressures of **1,600 bar** ensure that the fuel is perfectly atomised for **maximized combustion efficiency**, which not only **reduces fuel consumption** but also **increased torque and power**.

### › FILTER DPF

The engines comply with the emission requirements of **EU Stage IIIB and US EPA Tier 4 interim**. Thanks to a **particulate filter (DPF)** the **regeneration of the filter** takes place without interference on the operation under all operating conditions.

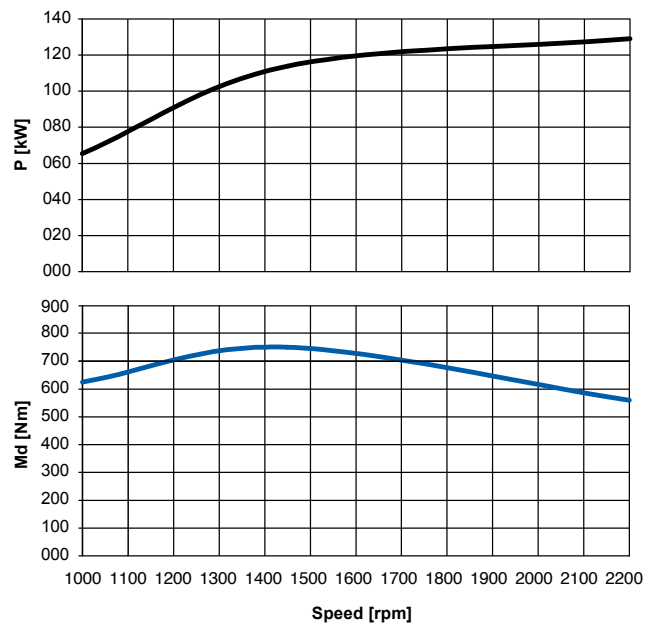
### › ENGINE MANAGEMENT

The powerful **DEUTZ Common Rail injection system (DCR®)** and the **electronic engine control (EMR 4)**, ensure **optimum engine performance and low fuel consumption**.



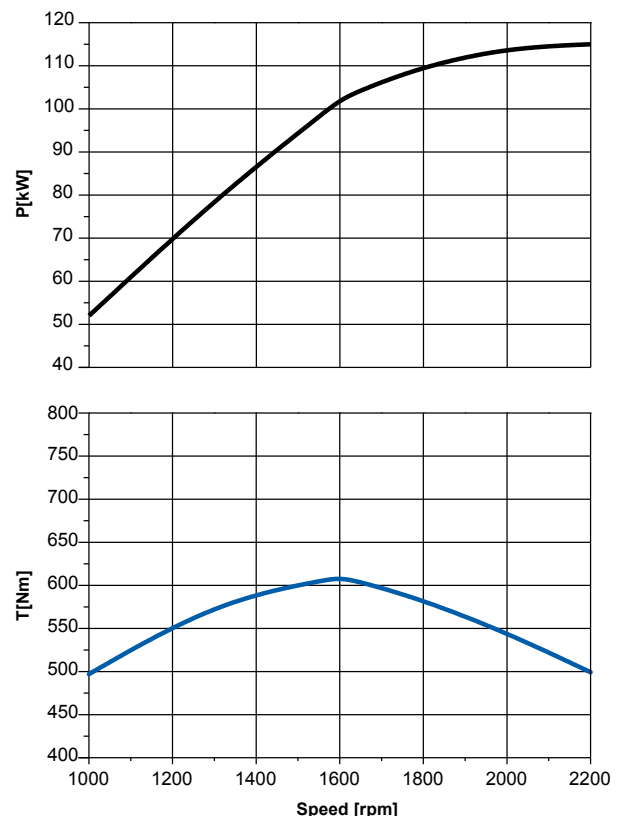
**13.63B**

**Deutz TCD 6.1 L6**  
135 kW - 184 HP



**11.63B  
12.63B**

**Deutz TCD 4.1 L4**  
121 kW - 164 HP



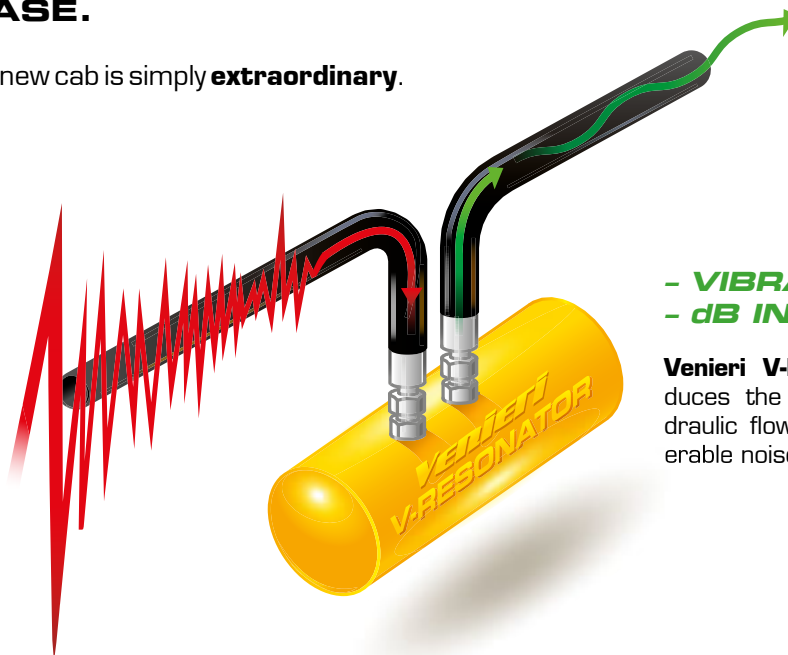


## SILENCE, PLEASE.

Noiselessness inside the new cab is simply **extraordinary**.  
Only **68 dB**.

**+ VIBRATIONS  
+ dB INSIDE  
CABIN**

Vibrations are inevitably generated by the hydraulic flow system.



**- VIBRATIONS  
- dB INSIDE CABIN**

**68dB  
INSIDE  
CABIN**

**Venieri V-Resonator** drastically reduces the vibrations caused by hydraulic flow, thus ensuring a considerable noise suppression in the cabin.

## VR00000000M!

Driving speed of **40 km/h** selflimited. We are in the Motor Valley and the speed is not an option. [limited to specific country regulation (TUV)].



## MAXIMUM POWER EXACTLY WHERE YOU NEED IT.

A lot of power for the hydraulic system and, at the same time, a reduction of the travel speed. For these reasons VF 11.63B, 12.63B and 13.63B wheel loaders need a single pedal. The brake pedal with **inching function** controls both the mechanical brake and the hydraulic one (inching). This gives real advantages as **less wear of the service brake** and **optimum distribution of engine power**.



**No pressure**  
on the inching/brake pedal:  
maximum power for traction.



**Normal pressure**  
on the inching/brake pedal:  
on speed reduction, and more power  
the hydraulic system service.



**Maximum pressure**  
on the inching/brake pedal:  
the wheel loader stops,  
maximum strength to the hydraulic system.

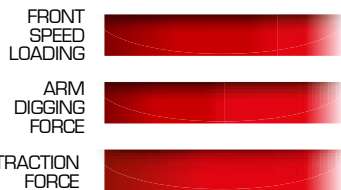
## HARD OR SMOOTH?

It's possible to select three operating modes from different work requirements. In each mode, the **Venieri Power Control** system manages the total torque of the engine and of the pump, ensuring constantly an adequate **hydraulic penetration force** and considerable **consumption control**.



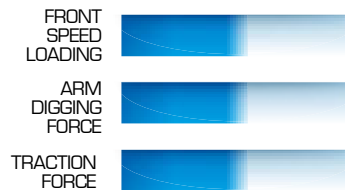
### FULLPOWER MODE

Ideal conditions of use with Asphalt planer, Snow blower and any other application where it is required maximum hydraulic capacity.



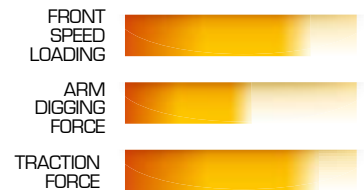
### PRECISION MODE

Ideal conditions of use with forks, handling heavy loads and precision works.



### AUTOMATIC MODE

Ideal condition of use providing the optimal balance between consumption and operational capacity.



## DARKNESS DOESN'T SCARE US.

**LED projectors, 6 working lights on cabin roof plus 4 additional headlights for road transfer** will allow you to work in safety and total autonomy, in all working conditions!





## DON'T GET HEATED!

The new wheel loaders VF 11.63B, VF 12.63B and VF 13.63B are able to work longer thanks to smart features, such as the **automatic cooling fan**.

The **reversible fan kit** allows a **facilitated cleaning** of the **radiator through a rotation in the opposite direction**, the duration and the number of cleaning cycles are chosen and discretion of the operator, according to the working conditions. (option)



## EASY ACCESS MAINTENANCE

The VF 11.63B, VF 12.63B and VF 13.63B wheel loaders are designed to **make faster and simple all routine maintenance procedures**. The engine/radiator bonnet can be opened completely, providing practical and easy access for daily checks. This ensures the **highest efficiency level to the machine** whenever it has to work, ensuring you plenty of time concentrating on the job to do.

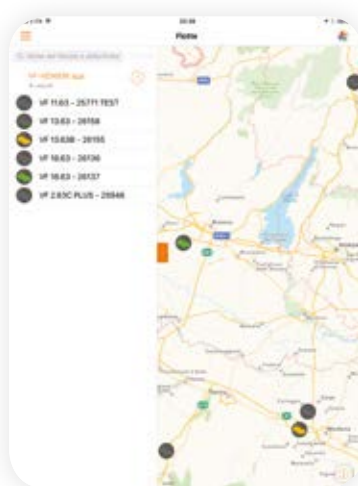




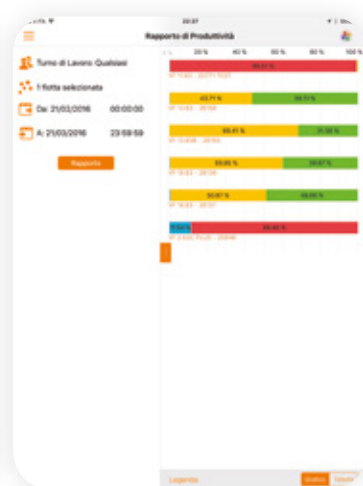
# VENIERI GLOBAL

**Venieri GLOBAL™** is the newest Venieri monitoring system by Satellite allowing increased productivity, providing detailed information on the fleet and equipment, as well as an incredible amount of data for ensuring the highest levels of performances and in greater economic efficiency.

- › **FLEET MANAGEMENT**
- › **MONITORING MACHINES**
- › **CONTROL MACHINES STATUS**



MONITORING  
FLEET



PRODUCTIVITY  
REPORT



Available, on **Windows e Mac**, **iOS** and **Android**.



REPORT  
ALARMS



ENGINE  
ON/OFF



## BASIC MACHINE



|   |   |   |   |
|---|---|---|---|
| Battery main switch                               | • | • | • |
| Tool box  | • | • | • |
| Fuel preheating (cold climates)                   | 0 | 0 | 0 |
| Plugs with keys for fuel and hydraulic tanks      | • | • | • |
| Proportional self lock front differential         | • | • | • |
| Proportional self lock rear differential          | 0 | 0 | 0 |
| Differential lock 100% engageable in front axle   | 0 | 0 | 0 |
| Trailer coupling                                  | • | • | • |
| Warning beacon                                    | • | • | • |
| Soundproofing                                     | • | • | • |
| Spare parts catalogue                             | • | • | • |
| User manual                                       | • | • | • |
| Type-approval for road traffic                    | • | • | • |
| Safety clamp for bucket and lifting cylinders     | • | • | • |
| Autolevelling ground level for bucket             | • | • | • |
| Speed reduction kit                               | 0 | 0 | 0 |
| "Venieri GLOBAL" system                           | 0 | 0 | 0 |
| Double-speed hydraulic fan                        | • | • | • |
| Reversible fan (for radiator cleaning)            | 0 | 0 | 0 |
| Hydraulic negative parking brake                  | • | • | • |
| Service brake on both axes with separate circuits | • | • | • |
| Inch pedal integrated in brake pedal              | • | • | • |
| Greasing points grouped on the frame              | • | • | • |
| Automatic centralized greasing system             | 0 | 0 | 0 |
| Ride control                                      | 0 | 0 | 0 |
| Engine preheating system                          | 0 | 0 | 0 |
| Environmental friendly hydraulic oil              | 0 | 0 | 0 |
| Hydraulic oil ISO 46 (cold climates)              | 0 | 0 | 0 |
| Vortex pre filter                                 | 0 | 0 | 0 |

## CABIN EQUIPMENT



|   |   |   |   |
|---|---|---|---|
| ROPS/FOPS 2nd Level, pressurized and soundproofed | • | • | • |
| Front and rear windscreen wiper with washer       | • | • | • |
| Halogen work lights (4 front + 2 rear)            | • | • | • |
| LED work lights (4 front + 2 rear)                | 0 | 0 | 0 |
| Ashtray   | • | • | • |
| Bottle holder                                     | • | • | • |
| Document compartment                              | • | • | • |
| Seat with mechanical suspension                   | • | • | • |
| Seat with pneumatic suspension                    | 0 | 0 | 0 |
| Seat with pneumatic suspension and heating        | 0 | 0 | 0 |
| Seat armrests                                     | • | • | • |
| Buzzer  | • | • | • |
| Cabin carpet                                      | • | • | • |
| Clothes hangers                                   | • | • | • |
| Radio preparation                                 | • | • | • |
| Supplementary socket 12V                          | • | • | • |
| Manual Air Conditioning                           | • | • | • |
| "Climatronic Venieri" system                      | 0 | 0 | 0 |
| Ceiling lamp                                      | • | • | • |
| Sun visor   | • | • | • |
| Rear view mirrors                                 | • | • | • |
| Heatable rear view mirrors                        | 0 | 0 | 0 |
| First-aid kit                                     | 0 | 0 | 0 |
| Fire extinguisher 2kg                             | 0 | 0 | 0 |
| Seat belt   | • | • | • |
| Instrumentation and dashboard with LCD display    | • | • | • |
| Safety glass breaker                              | • | • | • |
| Rear view camera with 7" color monitor            | 0 | 0 | 0 |
| Cameras 360°                                      | 0 | 0 | 0 |

## SPECIAL EQUIPMENT



|                                       |   |   |   |
|---------------------------------------|---|---|---|
| Hydraulic or mechanical quick coupler | 0 | 0 | 0 |
| Cement mixing bucket                  | 0 | 0 | 0 |
| Multipurpose bucket (4 in 1)          | 0 | 0 | 0 |
| Lifting forks                         | 0 | 0 | 0 |
| Asphalt and cement planer             | 0 | 0 | 0 |
| Snow blower                           | 0 | 0 | 0 |
| Snow blade and "V" type snow blade    | 0 | 0 | 0 |
| Angle-tilt dozer blade                | 0 | 0 | 0 |
| Hand operating hammer                 | 0 | 0 | 0 |
| Polishing brush                       | 0 | 0 | 0 |
| Trencher                              | 0 | 0 | 0 |
| High tip bucket                       | 0 | 0 | 0 |
| High flow kit                         | 0 | 0 | 0 |
| Unpressurized return pipe             | 0 | 0 | 0 |
| Double auxiliary line                 | 0 | 0 | 0 |
| Rear hydraulic line (single effect)   | 0 | 0 | 0 |





Via Piratello, 106 - 48022 Lugo (RA) - ITALY  
Tel. +39 0545 904411 Fax +39 0545 30389  
e-mail: [info@vf-venieri.com](mailto:info@vf-venieri.com) | [www.vf-venieri.com](http://www.vf-venieri.com)

#### **Spare Parts**

Tel. +39 0545 904429 Fax +39 0545 24555  
e-mail: [ricambi@vf-venieri.com](mailto:ricambi@vf-venieri.com)